



SUSTAINABLE FORESTRY

OUR COMMITMENTS AND CERTIFICATIONS

SUSTAINABILITY IS OUR PART IN THE WORLD

IMAGINING AND DELIVERING ON THE PROMISE OF A SUSTAINABLE FUTURE

OUR LONG-TERM COMMITMENTS

At WestRock, we are imagining and delivering on the promise of a sustainable future: building on our 100-year legacy to help create a more circular economy with renewable, nature-based recyclable packaging at its core. We organize our efforts around our three sustainability pillars: **Innovating for our Customers and their Customers, Bettering the Planet** and **Supporting People and Communities**.



At WestRock, one of our environmental commitments is to improve our planet through **sustainable forests** that remove CO₂ from the atmosphere, helping to **regenerate the planet**, while protecting the environment we share.

Our planted forests are the source of all raw material (**from renewable sources, biodegradable, compostable and recyclable**) used in our corrugated paper and packaging.

In our operations, we are **committed** to ensuring **responsible management and transparent traceability** of raw materials, proving their **sustainable origin**.

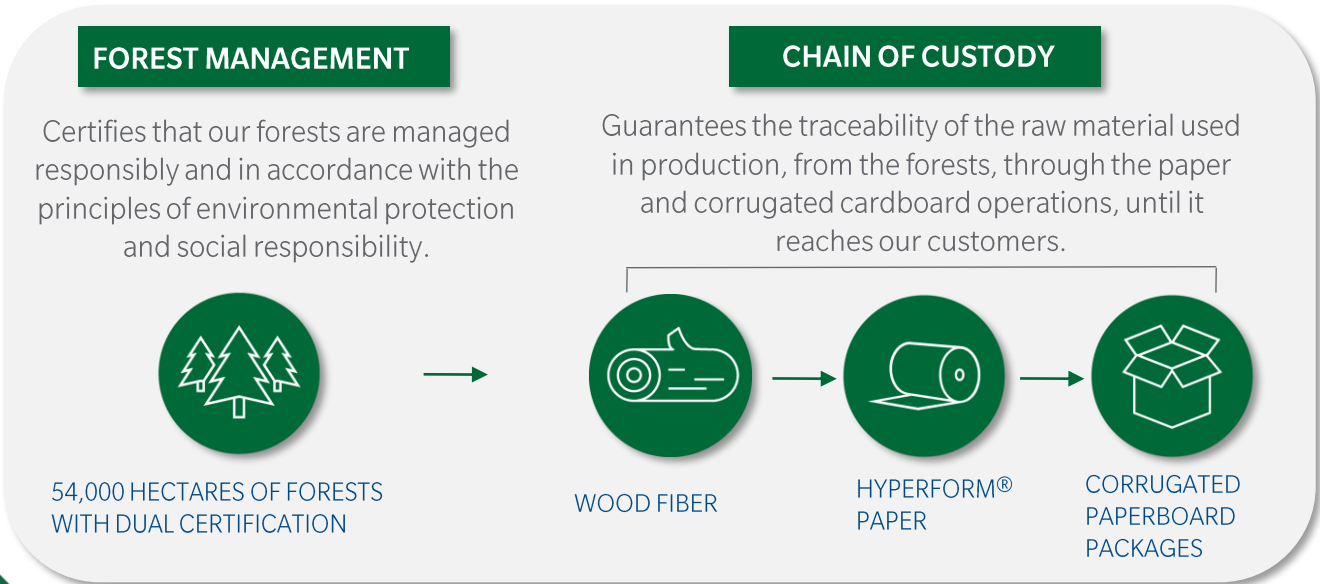
And we go further. We **have dual Forestry Management certifications** by internationally recognized institutions: PEFC Cerflor and FSC® (FSC-C131668), as well as FSC® certification of our **Chain of Custody** (FSC-C136420, multisite certified). Learn more below.



RESPONSABILITY. RELIABILITY.

OUR SUSTAINABLE FOREST MANAGEMENT

Our certifications demonstrate to all stakeholders (customers, communities, suppliers, employees, government, etc.) that we manage our main raw material in an **environmentally responsible, socially beneficial and economically viable way.**



Certified and **controlled** virgin fiber used in the production of our paper is traceable, making it possible to identify where, and under what conditions, it originates.. We also monitor the raw material from its origin through delivery, operations and until it reaches our customers. Our **Corrugated Cardboard Packaging factories** in Brazil also have FSC® certification (FSC-C136420 – multisite certified) in **chain of custody traceability.**



Through **responsible forest management and chain of custody traceability**, we mitigate potentially negative impacts on forests and biodiversity. We also attest that our production stages guarantee the sustainability of raw material, **respecting conservation principles, environmental preservation and social responsibility.**



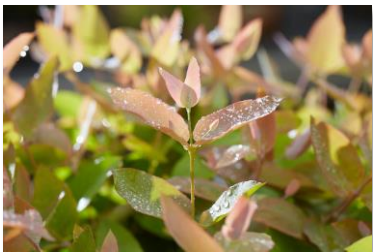
FOREST MANAGEMENT IN PRACTICE

Learn more about the principles followed by WestRock to obtain certifications and ensure their maintenance in annual audits:



SUSTAINABILITY OF FOREST RESOURCES

Adoption of initiatives that ensure the responsible use of forest resources, aimed at not compromising the potential use of these resources by future generations. This management includes forest inventory, good forestry practices, the use of forest technologies and work safety, health and environment programs.



COMPLIANCE WITH MUNICIPAL, STATE AND FEDERAL LAWS

Laws are strictly enforced, including: environmental licensing, conservation of Legal Reservations and Permanent Preservation Areas (PPA), respect for labor laws, health and safety standards, among others.



CARING FOR BIODIVERSITY

Forest management minimizes the negative impacts and enhances the positive effects of forestry operations. For this reason, the monitoring and survey of fauna and flora and the restoration of PPAs and Legal Reserves is carried out, with the result being that 594 species of fauna and flora (33 threatened with extinction) have been found to be present in WestRock forests.



RESPECTING GROUND, WATER AND AIR

Forest management practices and the technological development program must adopt techniques that prioritize the conservation of soil, water resources and air quality. This results in emissions control, adoption of soil conservation practices, rational use of chemicals, and the monitoring of water resources. There are over 2.780 million springs in WestRock forests.



FOREST MANAGEMENT PLAN

Our Forest Management Plan is written and scaled to the forestry operations, with a public summary released annually: www.westrock.com.br.



**ENVIRONMENTAL AND
REGIONAL ECONOMIC
DEVELOPMENT**

Adoption of a policy governing relations with employees and local communities, as well as highlighting the environmental, economic and social benefits of forestry activities. The policy includes socioeconomic development programs.



**MONITORING AND
EVALUATION**

Indices to systematically monitor forest conditions, productivity, the effects of forest management and the impacts of these activities.



**HIGH CONSERVATION
VALUE AREAS**

Special areas that must be preserved. E.g.: Gruta Santa Emília (SC) and Reserva Wrublevski (SC) – others under evaluation.



**RIGHTS AND
RESPONSIBILITIES
FOR OWNERSHIP AND
USE OF LAND**

Land ownership and rights are clearly defined and documented through deeds, boundaries, maps, etc.



**INDIGENOUS
PEOPLE’S RIGHTS**

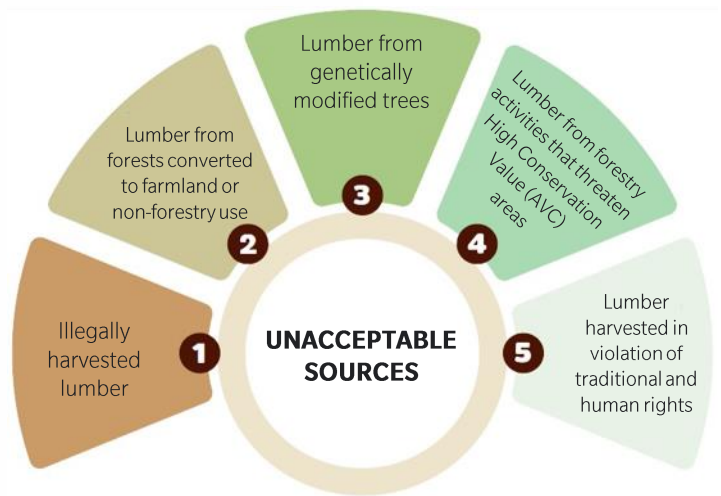
While there are no indigenous areas in the vicinity of WestRock forests, there are several traditional communities whose rights are recognized and respected.



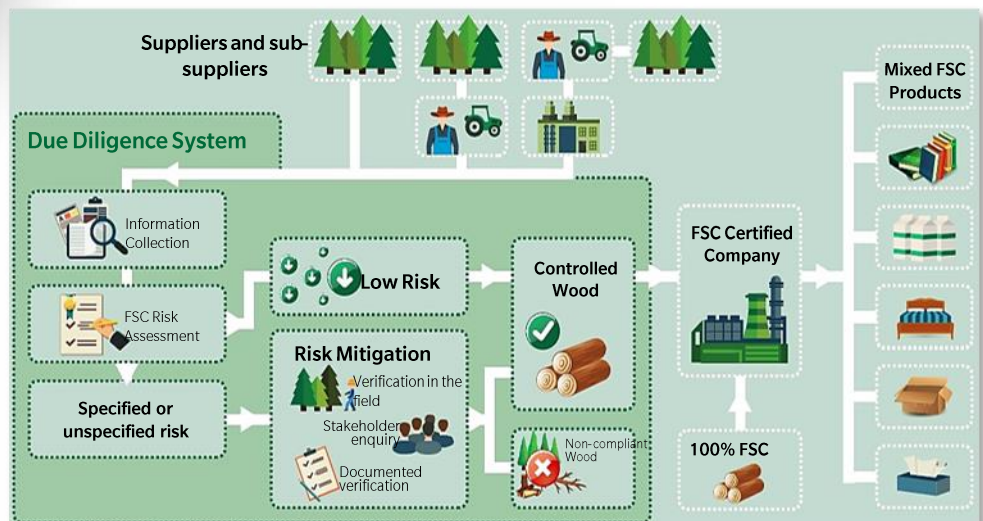
RESPONSIBILITY. RELIABILITY.

CHAIN OF CUSTODY

Traceability of the chain of custody throughout the production process in the Forestry, Paper and Corrugated Paperboard businesses shows our customers that we fulfill all requirements to prevent negative impacts to forests and biodiversity. Among the goals for certifications of our chain of custody is consideration of five classes of unacceptable sources that cannot, in any way, enter our production chain*:



Furthermore, through the **Due Diligence System** (SDD), we can **verify the origin** and the supply chain of non-certified materials, avoiding **raw material from unacceptable sources**. Thus, we ensure sustainability and responsibility in all stages of our operations, from forests to the corrugated paperboard packaging that reaches our customers:





OPERATIONAL CONTROL

There are only two types of wood fiber used at WestRock: those that are certified and those that are controlled. Learn more about how the verification process works.



INFORMATION CROSS-REFERENCING

First, we verify and ensure that the area from which the fiber will be extracted is not located around conservation areas or traditional or protected lands.



LEGAL DOCUMENTATION

Documentation attesting to the legality of land ownership and the forestry operations carried out at the site is verified. We also check if the forestry area is already certified or if a field assessment is needed.



FIELD AUDITS

Field inspections are performed to verify the quality of forest management practices in each extraction area, particularly with regards to compliance with environmental and labor laws.



RECORDS

All wood is properly registered in invoices upon leaving the farm, including information of volume, the site of extraction and type of wood (*Pinus* or *Eucalyptus*)



CONTROL BARRIERS

The information gathered is verified and only raw materials that meet the necessary requirements are cleared to enter the paper mill, thereby guaranteeing that they are reliably sourced.

The volume of wood that enters the mill meeting the respective criteria is converted into **certification credits**, which are subsequently used in the production of **HyPerform® paper** and **corrugated packaging**.